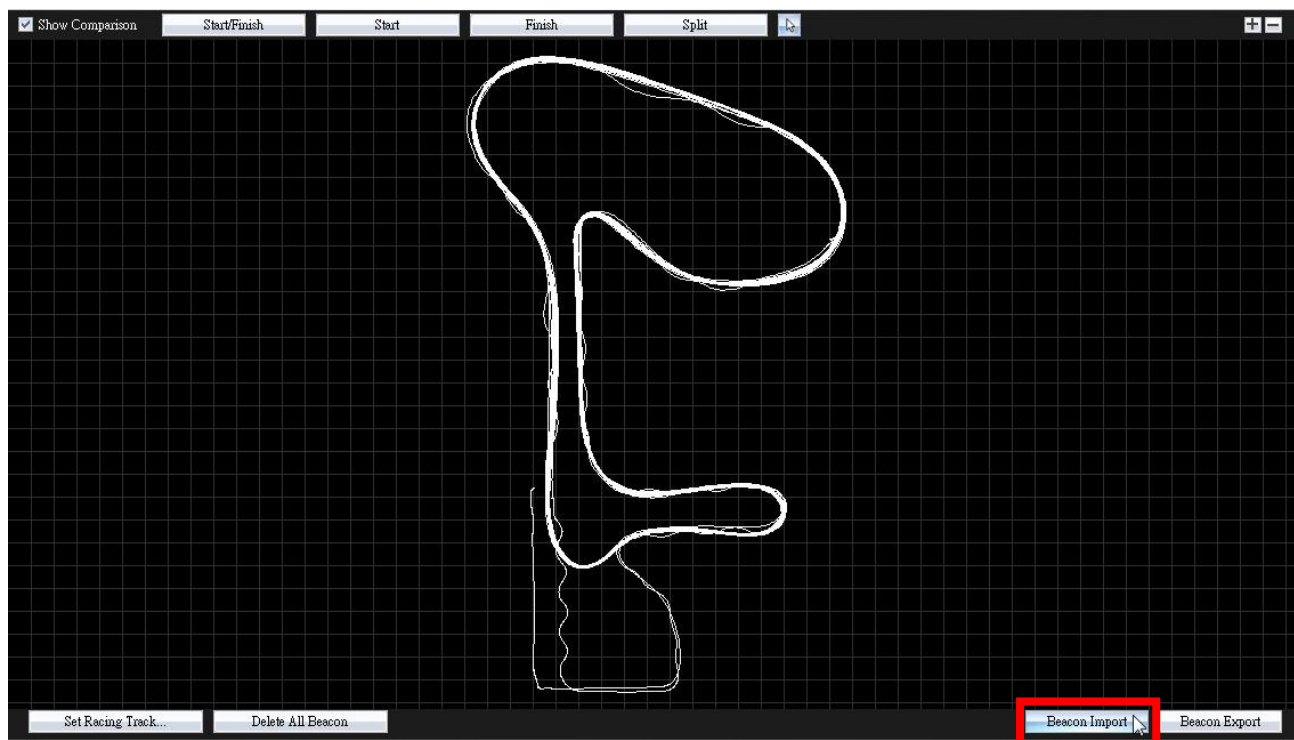
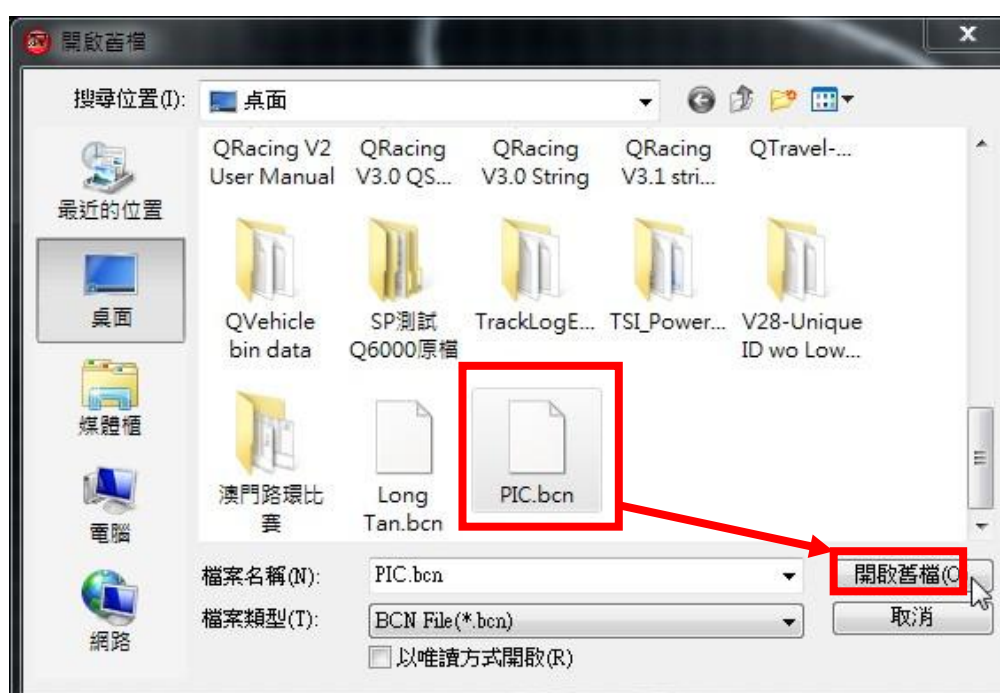


Import Beacon (Start/Finish, Split line):

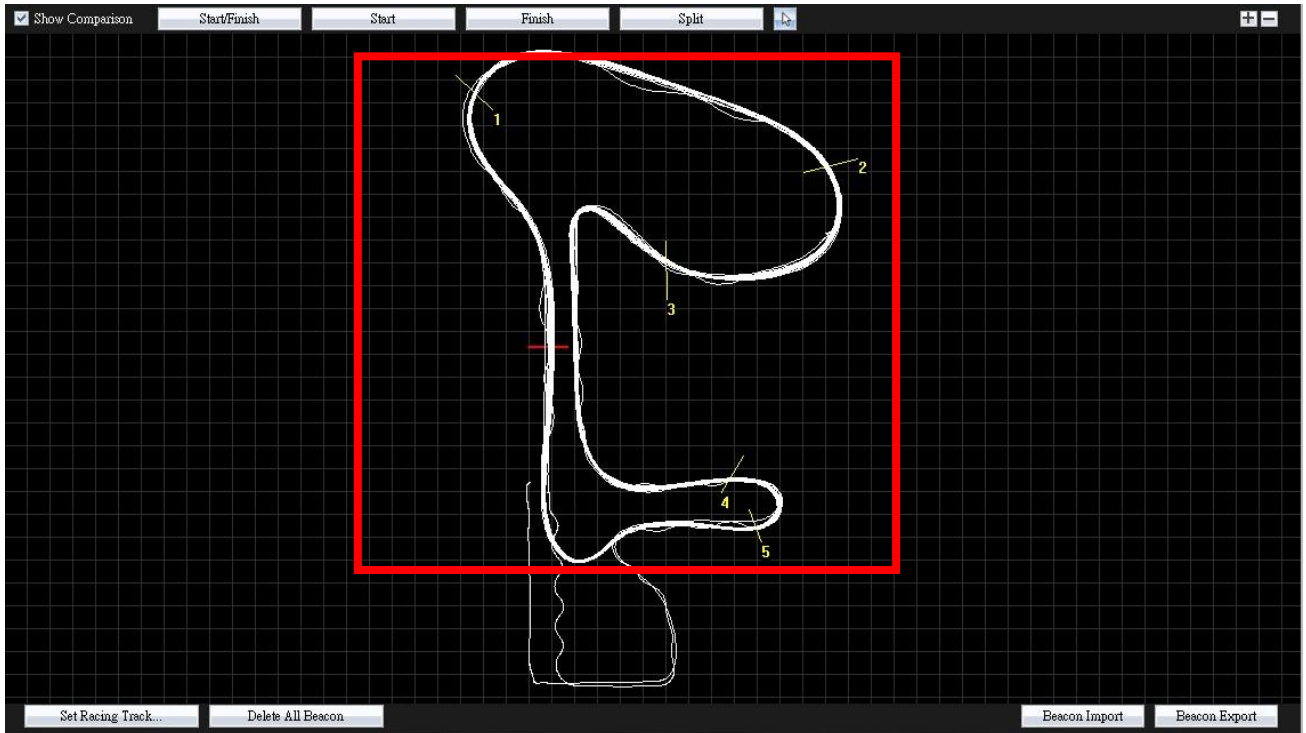
1. In Beacon page, click on **Beacon Import** at the bottom-right to import beacon file.



2. Select the beacon file .bcn that you want to import and click on Open :



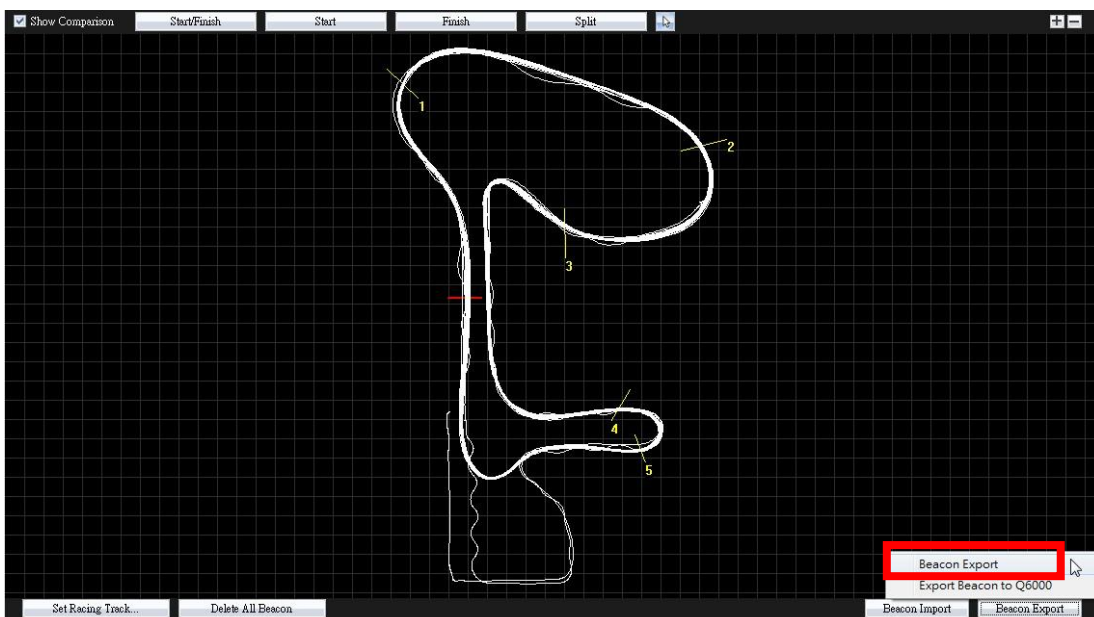
3. You will see the Start/Finish and Splits line overlay on the track once successfully imported.



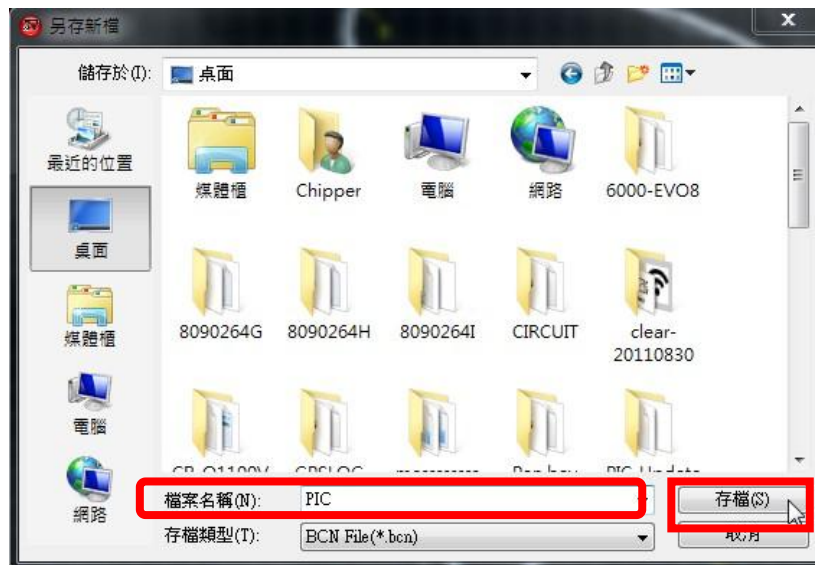
Export Beacon (Start/Finish and Split line):

1. In Beacon page, once set up track's beacon, click on **Beacon Export** →

Beacon Export at the bottom-right corner.

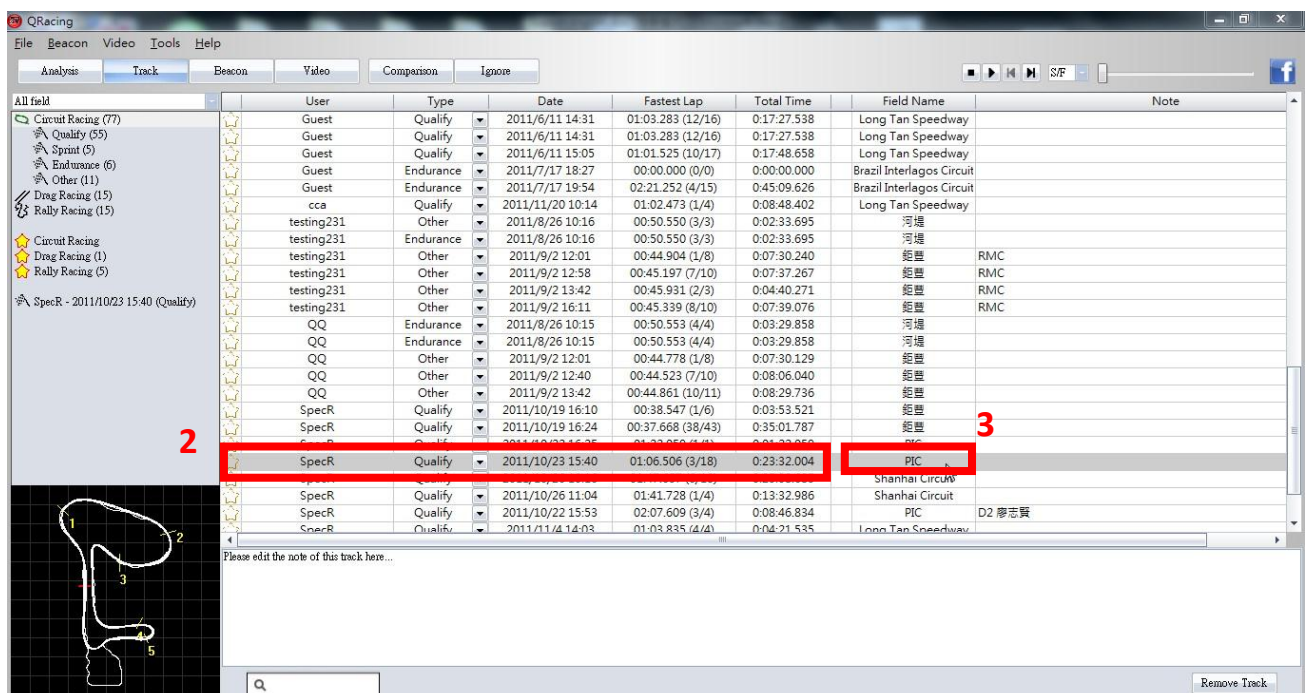


2. Select the desire path or location and type a file name, then click on **Save** to complete export beacon.

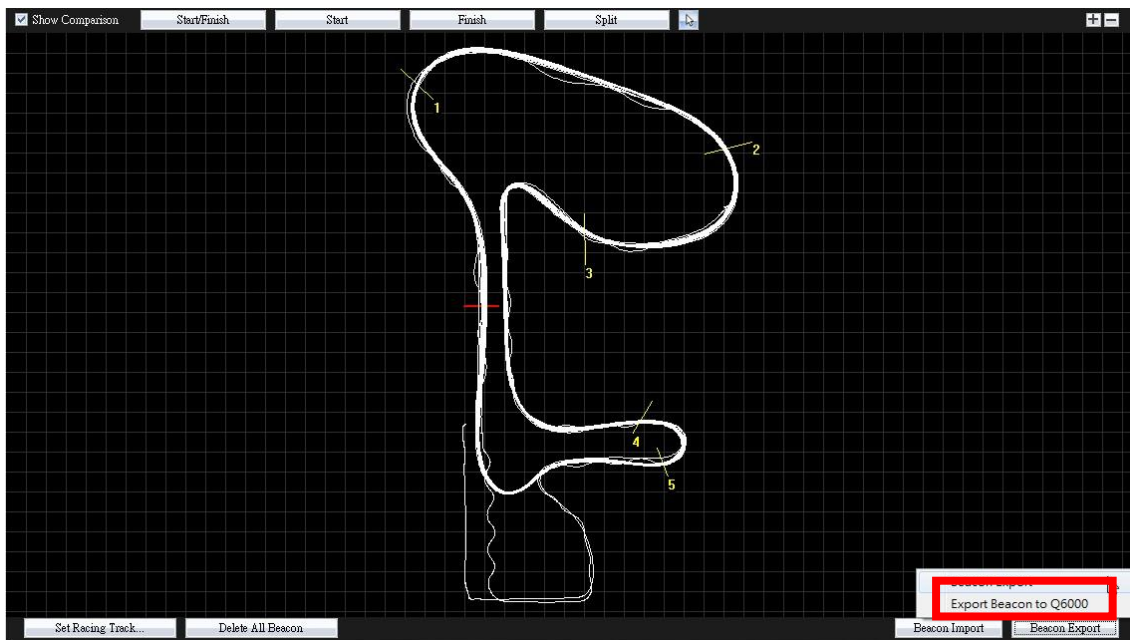


Export beacon to LT-Q6000

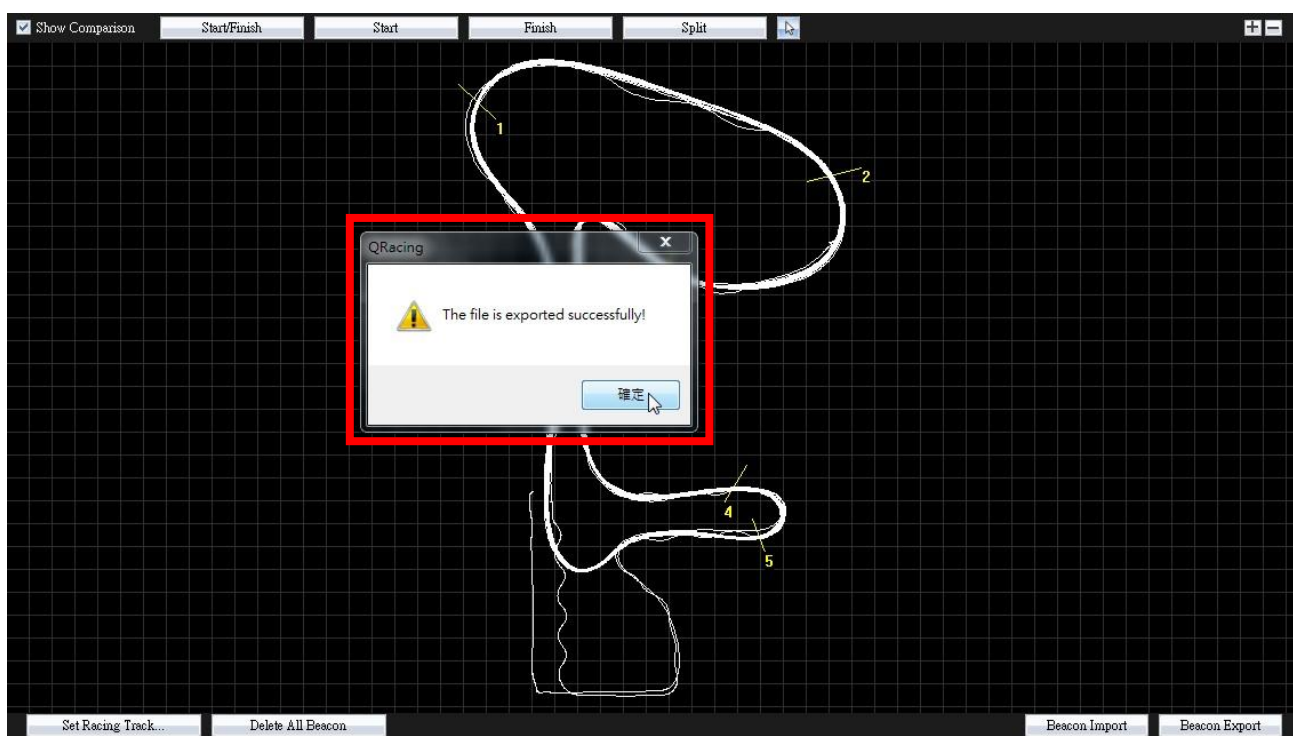
1. Please turn off LT-Q6000 and connect it with your computer.
2. Select the track that you want to export beacon.
3. The field name will also be used as beacon's note.



4. In Beacon page, set up track's beacon and click on **Beacon Export** → **Beacon Export to Q6000** at bottom-right corner.



5. When the screen display a message box **“The file is imported successfully”** mean the beacon is uploaded.

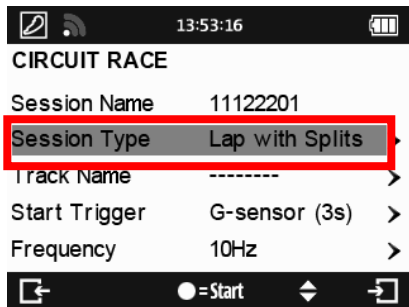


6. The uploaded beacon file will be saved in LT-Q6000/ BEACON/SHARED folder and named with BCN(x) format, you can load it later from

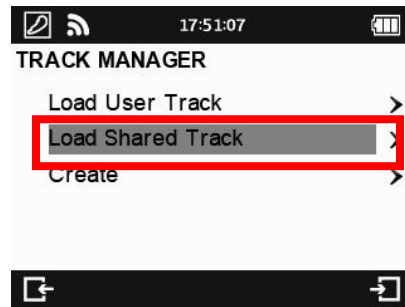
LT-Q6000>>Circuit Mode>> Lap with Splits >>Track Name >>LOAD

SHARED TRACK.

1



2



3

